



Australian Government
Operation COVID Shield

COVID-19 Vaccine Roll-out

08 October 2021

Data as at:
07 Oct 2021

Total vaccine doses



29,973,051 total vaccine
doses administered nationally as at 07 October
+330,621 recorded in the last 24 hours



16,799,188

people have had at least one
dose

81.5%

of people over the age of 16
have had at least one dose



12,423,475

people are fully vaccinated

60.2%

of people over the age of 16 are
fully vaccinated

NSW
10,815,590
(+115,924 daily
increase)

VIC
7,939,686
(+95,301 daily
increase)

QLD
5,139,008
(+57,030 daily
increase)

WA
2,590,967
(+27,730 daily
increase)

TAS
634,396
(+4,668 daily
increase)

SA
1,827,995
(+19,882 daily
increase)

ACT
743,329
(+8,340 daily
increase)

NT
282,080
(+1,746 daily
increase)

*Administration state breakdown indicates state in which a vaccine was administered

**Overall dose count includes instances of more than two doses per person in a small number of cases.

Source: Australian Immunisation Register

Data as at:
07 Oct 2021

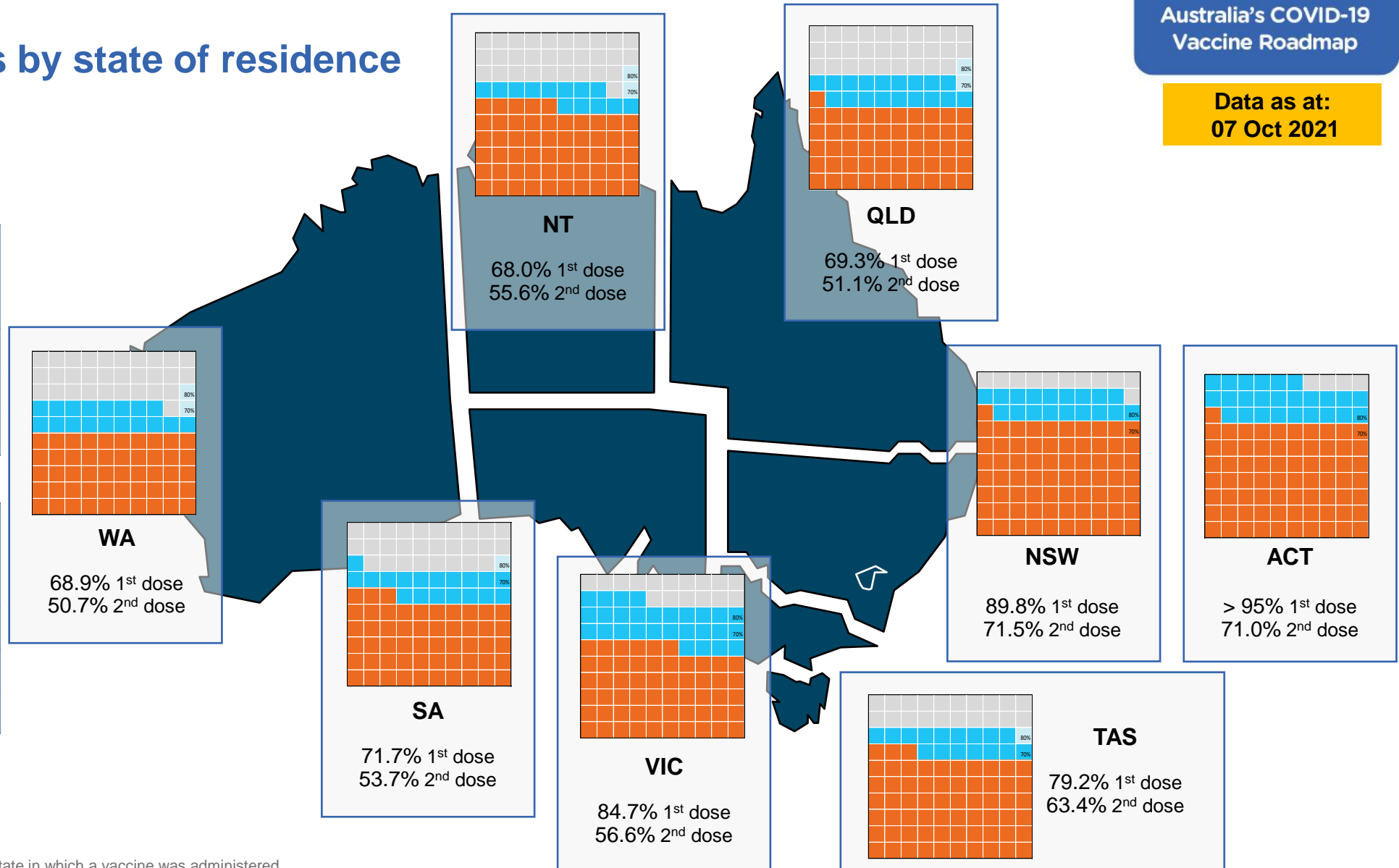
Vaccinations by state of residence

First doses

| Age | Today | 4 weeks ago | 8 weeks ago |
|-----|-------|-------------|-------------|
| 16+ | 81.5% | 66.8% | 47.5% |
| 50+ | 91.2% | 83.7% | 72.1% |
| 70+ | >95% | 91.2% | 84.3% |

Fully vaccinated

| Age | Today | 4 weeks ago | 8 weeks ago |
|-----|-------|-------------|-------------|
| 16+ | 60.2% | 41.7% | 25.8% |
| 50+ | 75.1% | 61.1% | 37.4% |
| 70+ | 81.5% | 70.7% | 52.4% |



*Residential state may differ from the state in which a vaccine was administered

Commonwealth and Jurisdiction vaccine doses administered

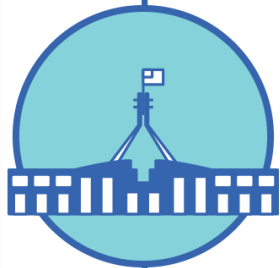
Data as at:
07 Oct 2021



29,973,051 total vaccine
doses administered nationally as at 07 October
+ 330,621 recorded in the last 24 hours



12,562,196
doses administered by state
and territory facilities
+ 109,338
recorded in the last 24 hours



17,410,855
doses administered by
commonwealth facilities
+ 221,283
recorded in the last 24 hours

16,375,900 total vaccine doses
administered in primary care settings
1,034,955 total vaccine doses
administered in aged care and disability
settings

| NSW | Jurisdictions | Commonwealth |
|----------------|---------------|--------------|
| Cumulative | 3,725,135 | 7,090,455 |
| Daily increase | 23,656 | 92,268 |

| VIC | Jurisdictions | Commonwealth |
|----------------|---------------|--------------|
| Cumulative | 3,762,386 | 4,177,300 |
| Daily increase | 35,406 | 59,895 |

| QLD | Jurisdictions | Commonwealth |
|----------------|---------------|--------------|
| Cumulative | 2,087,153 | 3,051,855 |
| Daily increase | 19,580 | 37,450 |

| WA | Jurisdictions | Commonwealth |
|----------------|---------------|--------------|
| Cumulative | 1,256,014 | 1,334,953 |
| Daily increase | 12,774 | 14,956 |

| TAS | Jurisdictions | Commonwealth |
|----------------|---------------|--------------|
| Cumulative | 351,552 | 282,844 |
| Daily increase | 3,230 | 1,438 |

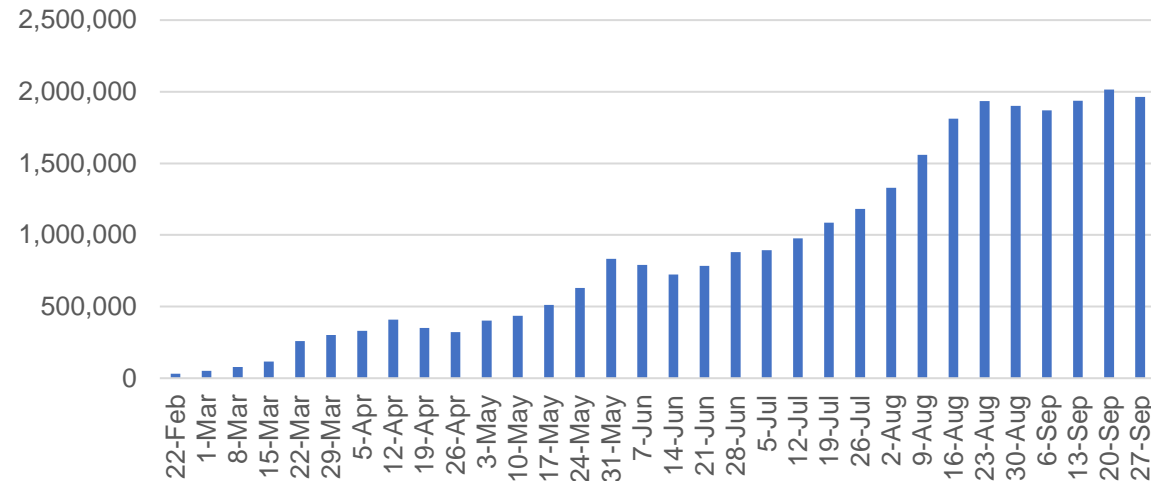
| SA | Jurisdictions | Commonwealth |
|----------------|---------------|--------------|
| Cumulative | 844,874 | 983,121 |
| Daily increase | 9,441 | 10,441 |

| ACT | Jurisdictions | Commonwealth |
|----------------|---------------|--------------|
| Cumulative | 365,141 | 378,188 |
| Daily increase | 4,269 | 4,071 |

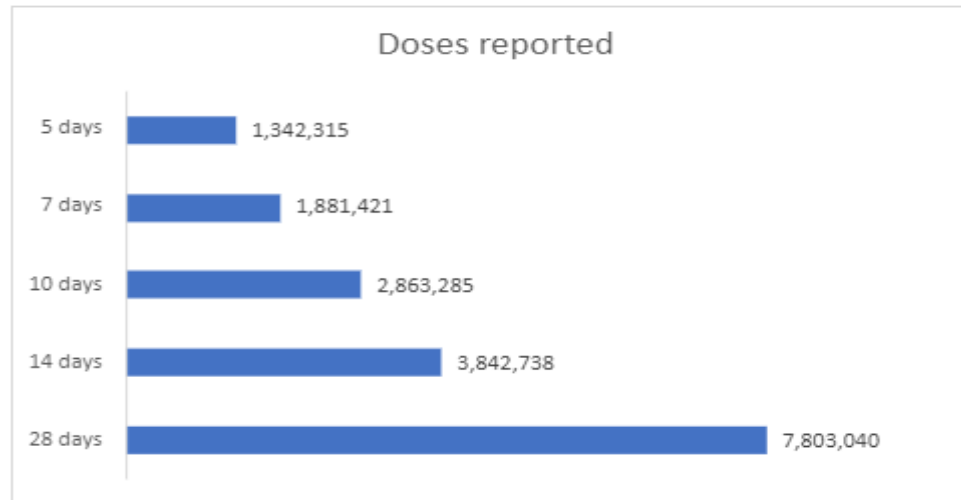
| NT | Jurisdictions | Commonwealth |
|----------------|---------------|--------------|
| Cumulative | 169,941 | 112,139 |
| Daily increase | 982 | 764 |

Vaccine milestone charts

Jabs in arms by week



Doses reported

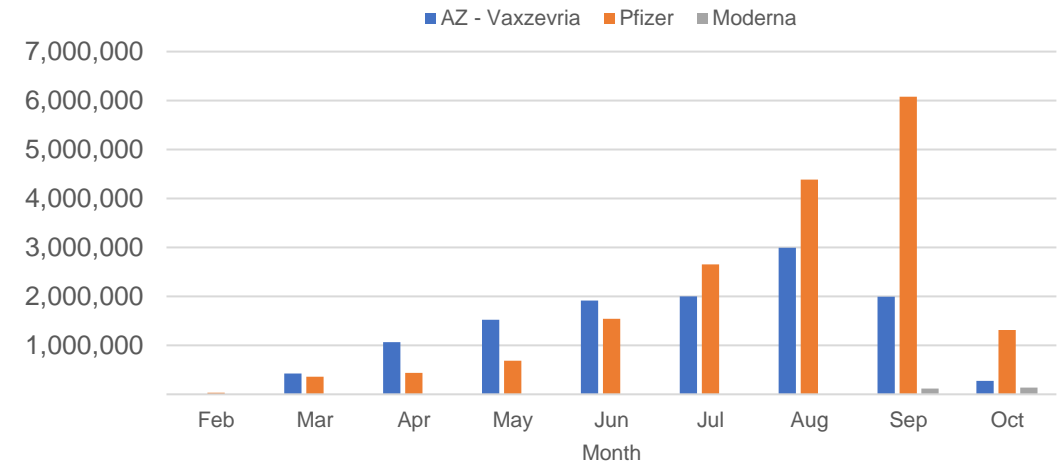


*Sourced from the Australian Immunisation Register.

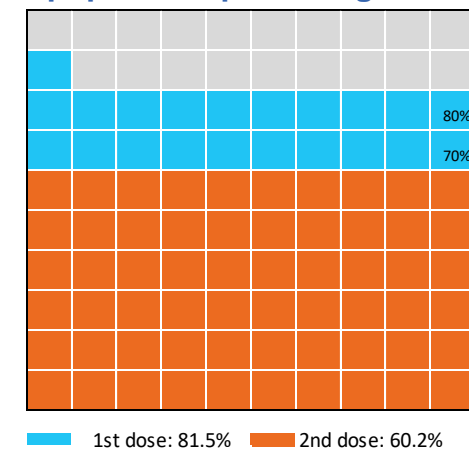
Data as at:
07 Oct 2021

Australia's COVID-19
Vaccine Roadmap

Doses by administration month and vaccine type



Eligible population percentage coverage



*Each square represents 1% of the national population.
Squares are filled as milestones are achieved.

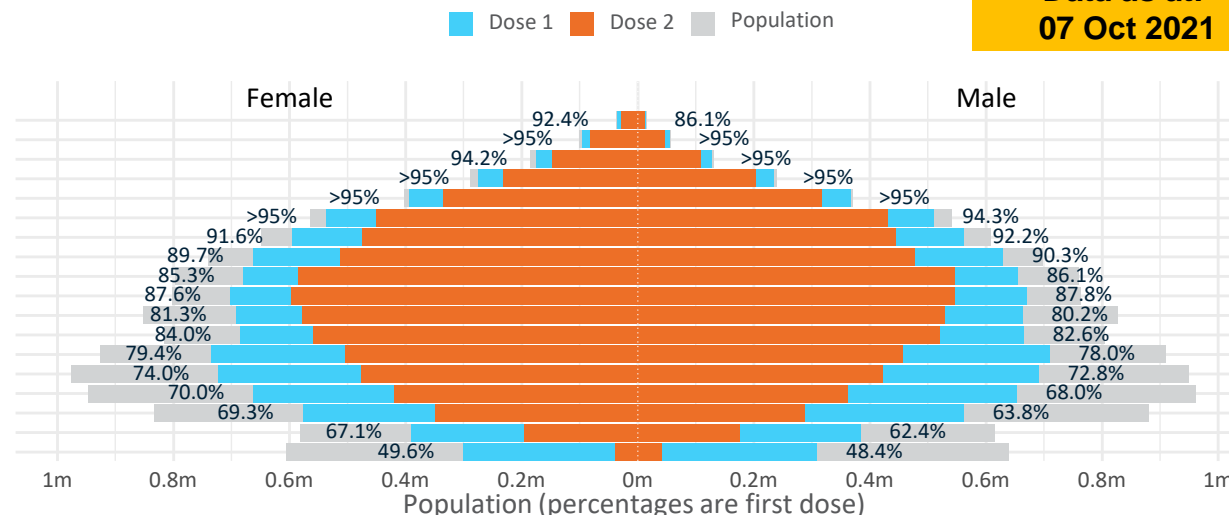
Data as at:
07 Oct 2021

Doses by age and sex

First and second doses by age and sex

| | 16+ | 50+ | 70+ | 12-15 |
|--------|---|---|---|---|
| Dose 1 | 81.47% (16,799,188 doses / 20,619,959 people) | 91.20% (7,979,397 doses / 8,749,703 people) | >95% (2,819,500 doses / 2,934,706 people) | 48.98% (609,280 doses / 1,243,990 people) |
| Dose 2 | 60.25% (12,423,475 doses / 20,619,959 people) | 75.15% (6,575,154 doses / 8,749,703 people) | 81.53% (2,392,668 doses / 2,934,706 people) | 6.41% (79,766 doses / 1,243,990 people) |

| Age | Dose 1 | Dose 2 |
|-------|-------------------|-------------------|
| 95+ | 48,012 (90.7%) | 40,365 (76.3%) |
| 90-94 | 151,594 (>95%) | 128,265 (81.0%) |
| 85-89 | 302,139 (>95%) | 255,522 (80.8%) |
| 80-84 | 509,508 (>95%) | 434,980 (82.3%) |
| 75-79 | 760,828 (>95%) | 652,262 (84.3%) |
| 70-74 | 1,047,419 (94.8%) | 881,274 (79.8%) |
| 65-69 | 1,157,980 (92.0%) | 918,970 (73.0%) |
| 60-64 | 1,293,948 (90.1%) | 990,396 (68.9%) |
| 55-59 | 1,334,620 (85.8%) | 1,130,168 (72.6%) |
| 50-54 | 1,373,349 (87.8%) | 1,142,952 (73.1%) |
| 45-49 | 1,356,224 (80.9%) | 1,108,129 (66.1%) |
| 40-44 | 1,351,613 (83.4%) | 1,079,068 (66.6%) |
| 35-39 | 1,448,464 (78.9%) | 962,158 (52.4%) |
| 30-34 | 1,420,259 (73.8%) | 901,826 (46.9%) |
| 25-29 | 1,324,955 (69.5%) | 786,173 (41.2%) |
| 20-24 | 1,144,017 (66.8%) | 639,357 (37.3%) |
| 16-19 | 774,259 (64.7%) | 371,610 (31.1%) |
| 12-15 | 609,280 (49.0%) | 79,766 (6.4%) |



| | AUS | ACT | NSW | NT | QLD | SA | TAS | VIC | WA |
|---------------------------|-------------|---------|-----------|---------|-----------|-----------|---------|-----------|-----------|
| 16 and over - dose 1 | 16,799,188 | 330,243 | 5,894,982 | 129,546 | 2,848,732 | 1,032,144 | 348,778 | 4,578,538 | 1,456,820 |
| 16 and over - dose 2 | 12,423,475 | 244,186 | 4,693,523 | 105,917 | 2,099,944 | 772,808 | 279,279 | 3,059,249 | 1,072,152 |
| 16 and over - population | 20,619,959* | 344,037 | 6,565,651 | 190,571 | 4,112,707 | 1,440,400 | 440,172 | 5,407,574 | 2,114,978 |
| 16 and over % with dose 1 | 81.47% | >95% | 89.79% | 67.98% | 69.27% | 71.66% | 79.24% | 84.67% | 68.88% |
| 16 and over % with dose 2 | 60.25% | 70.98% | 71.49% | 55.58% | 51.06% | 53.65% | 63.45% | 56.57% | 50.69% |
| 50 and over - dose 1 | 7,979,397 | 130,825 | 2,679,996 | 48,851 | 1,499,464 | 579,396 | 196,775 | 2,041,121 | 753,809 |
| 50 and over - dose 2 | 6,575,154 | 115,217 | 2,290,876 | 41,566 | 1,203,803 | 457,436 | 166,614 | 1,668,802 | 597,086 |
| 50 and over - population | 8,749,703 | 127,802 | 2,807,793 | 62,280 | 1,758,855 | 674,384 | 220,036 | 2,211,211 | 885,370 |
| 50 and over % with dose 1 | 91.20% | >95% | >95% | 78.44% | 85.25% | 85.91% | 89.43% | 92.31% | 85.14% |
| 50 and over % with dose 2 | 75.15% | 90.15% | 81.59% | 66.74% | 68.44% | 67.83% | 75.72% | 75.47% | 67.44% |
| 70 and over - dose 1 | 2,819,500 | 42,530 | 946,505 | 10,458 | 536,092 | 223,643 | 73,716 | 707,584 | 259,075 |
| 70 and over - dose 2 | 2,392,668 | 37,954 | 827,056 | 8,926 | 451,379 | 180,555 | 63,100 | 597,417 | 211,040 |
| 70 and over - population | 2,934,706 | 39,946 | 962,606 | 12,343 | 577,767 | 240,514 | 77,155 | 743,519 | 280,281 |
| 70 and over % with dose 1 | >95% | >95% | >95% | 84.73% | 92.79% | 92.99% | >95% | >95% | 92.43% |
| 70 and over % with dose 2 | 81.53% | >95% | 85.92% | 72.32% | 78.12% | 75.07% | 81.78% | 80.35% | 75.30% |
| 12 to 15 - dose 1 | 609,280 | 16,552 | 254,277 | 4,447 | 84,470 | 20,254 | 6,222 | 187,169 | 32,247 |
| 12 to 15 - dose 2 | 79,766 | 1,406 | 45,270 | 2,052 | 11,067 | 1,644 | 1,149 | 14,493 | 2,221 |
| 12 to 15 - population | 1,243,990 | 19,693 | 390,330 | 13,060 | 270,146 | 82,747 | 26,308 | 308,611 | 132,869 |
| 12 to 15 % with dose 1 | 48.98% | 84.05% | 65.14% | 34.05% | 31.27% | 24.48% | 23.65% | 60.65% | 24.27% |
| 12 to 15 % with dose 2 | 6.41% | 7.14% | 11.60% | 15.71% | 4.10% | 1.99% | 4.37% | 4.70% | 1.67% |

*National population will not equal sum of listed jurisdictions due to a small number of people counted in national population residing in some 'other' territories. Sum of state doses will not add to national total as some records are unable to be geocoded to a State or Territory.

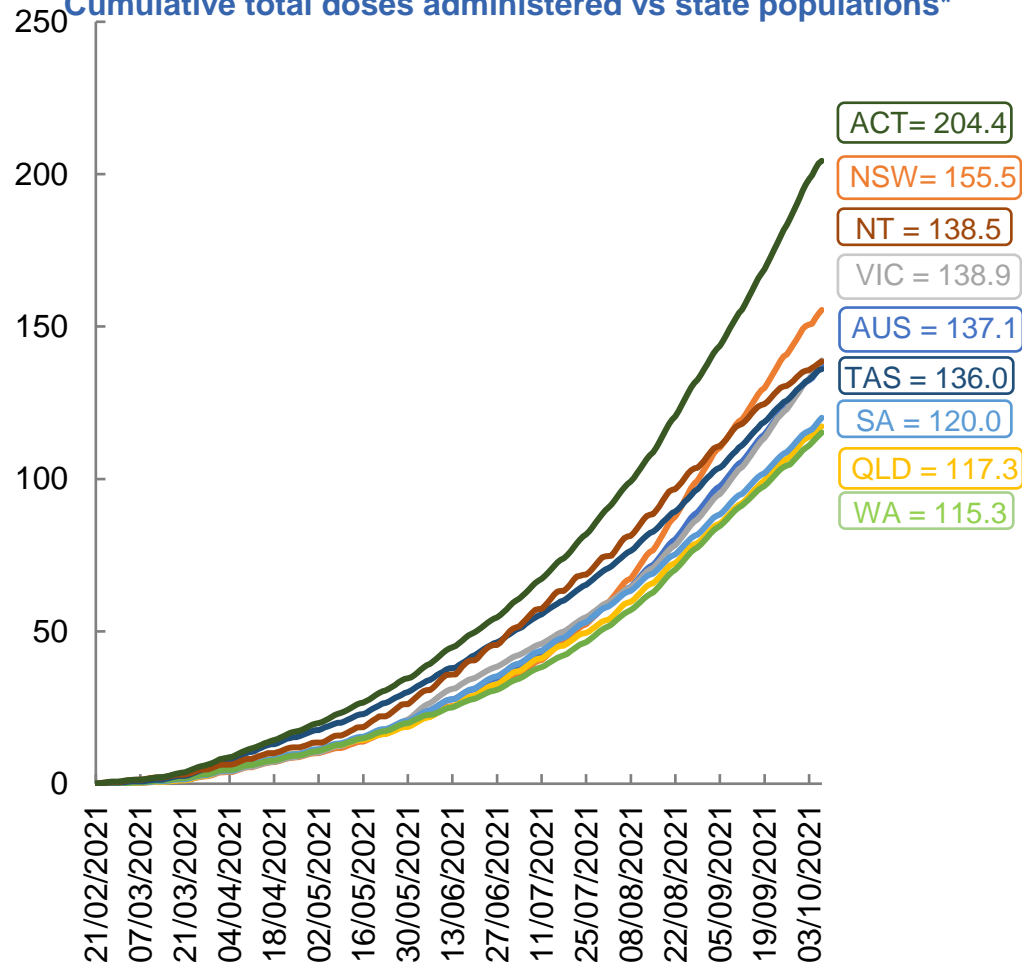
Doses sourced from Australian Immunisation Register, population from ABS ERP June 2020

Vaccinations by location

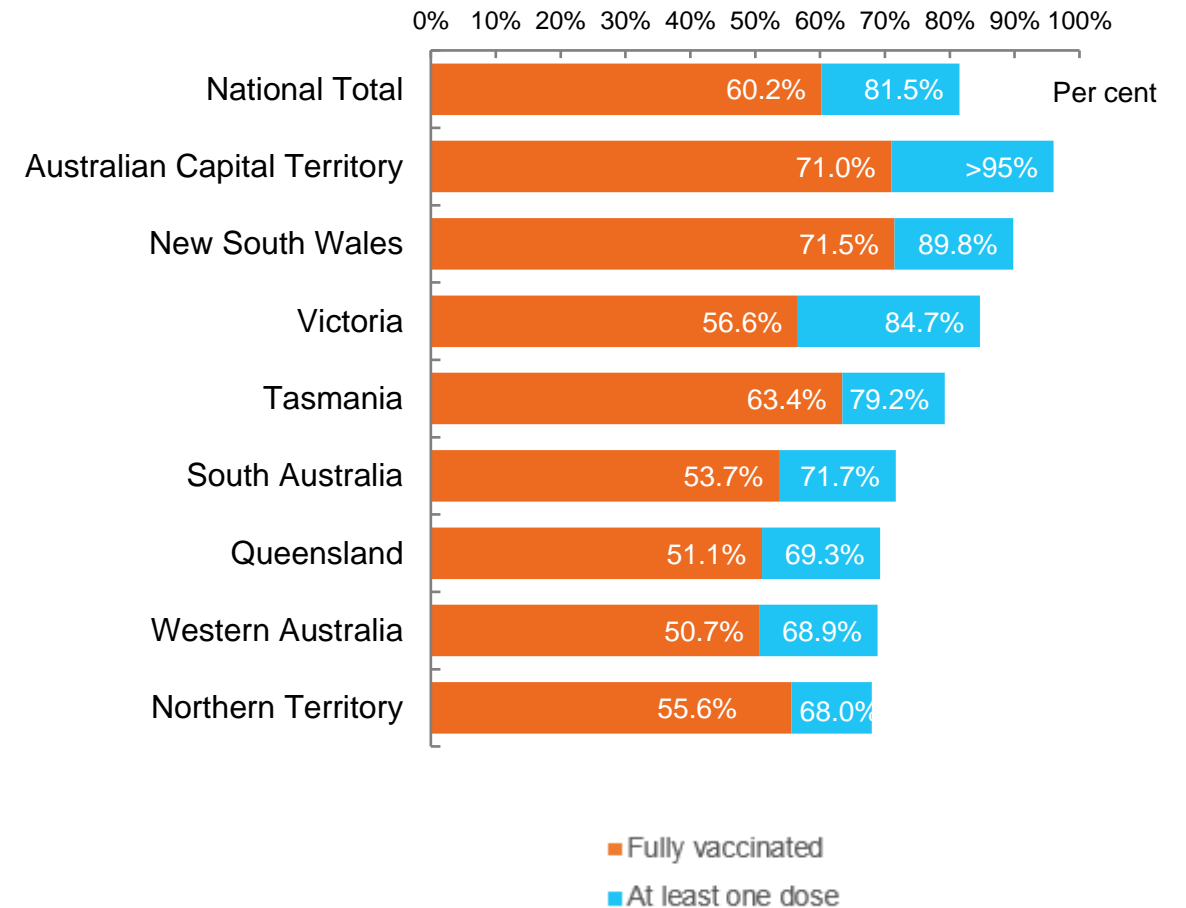
Data as at:
07 Oct 2021

Australia's COVID-19
Vaccine Roadmap

Cumulative total doses administered vs state populations*



First and Second Doses by state of residence



*Not an indication of percentage vaccinated, numbers will exceed 100 due to multiple doses required per person of the population

Aboriginal and Torres Strait Islander peoples

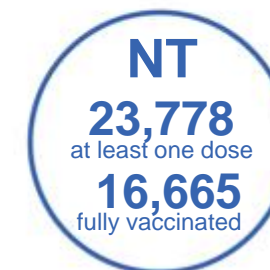
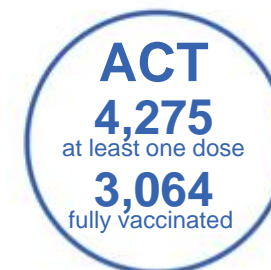
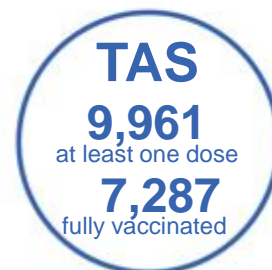
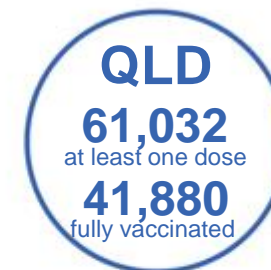
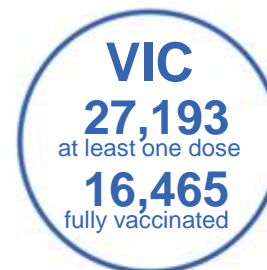
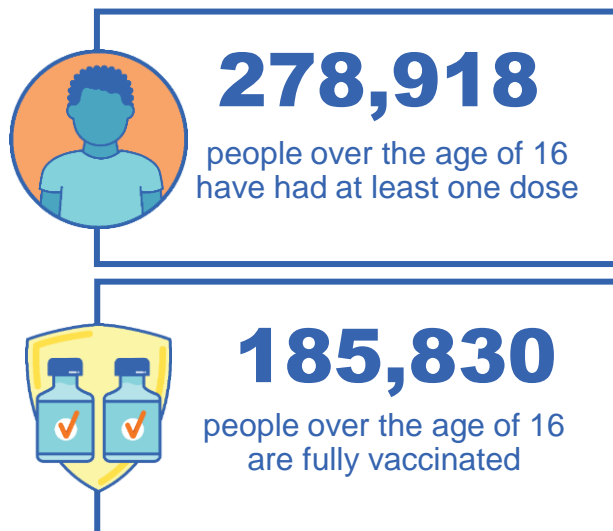
Number of people vaccinated

Data as at:
03 Oct 2021
Updated weekly

Australia's COVID-19
Vaccine Roadmap

167 Aboriginal community controlled health services (ACCHS)

| | | | | | | | |
|-----|-----|----|-----|----|-----|-----|----|
| 0# | 48 | 26 | 39 | 12 | 3 | 21 | 18 |
| ACT | NSW | NT | QLD | SA | TAS | VIC | WA |



7,518 people with at least one dose
4,319 people fully vaccinated

residing in other territories or with missing residential information

Source: Australian Immunisation Register

*Identifying as Aboriginal and Torres Strait Islander is optional and the estimated population may be under reported.

**Includes all Aboriginal and Torres Strait Islander peoples who have received a vaccination, not limited to those administered in an ACCHS setting

***Updated weekly.

#ACCHS in the ACT are currently operating as a Commonwealth Vaccine Clinics so not included to avoid double counting

Data as at:
07 Oct 2021

Commonwealth primary care



Primary care vaccine administration sites

| | | | |
|--------------|------------|------------|--------------|
| 5,528 | 137 | 167 | 3,329 |
| GPs | CVCs | ACCHS | Pharmacies |



16,375,900 total vaccine doses administered primary care settings as at 07 October
+ 217,931 recorded in the last 24 hours

Primary care vaccinations by provider type

| | Doses administered | Daily increase | 7 day increase |
|--|--------------------|----------------|----------------|
| General Practice* includes other Commonwealth | 15,348,214 | 180,081 | 936,167 |
| Pharmacy | 1,027,686 | 37,850 | 202,047 |



91,482 doses administered to persons residing in other territories or with missing residential information

*General practice includes Commonwealth Vaccination Clinics, Aboriginal Community Health Centres, Royal Flying Doctor Service and other Commonwealth vaccination facilities

Source: Australian Immunisation Register

Data as at:
07 Oct 2021

Commonwealth aged care and disability doses administered



1,034,955 (+ 3,352 last 24 hours)

Total vaccine doses administered in aged care and disability facilities as at 07 October

Number of doses administered as part of the Commonwealth aged and disability care rollout

NSW
484,504
(+1,004 daily increase)

VIC
186,017
(+167 daily increase)

QLD
184,178
(+1,952 daily increase)

WA
64,140
(+48 daily increase)

TAS
16,749
(-1# daily increase)

SA
57,513
(+61 daily increase)

ACT
12,139
(-2# daily increase)

NT
5,702
(+0 daily increase)

*Sourced from the Australian Immunisation Register. Includes all persons vaccinated at participating residential aged care, disability and related industry settings.

**State level breakdown indicates the residential location and may not align to the state in which the vaccination occurred.

#Numbers are calculated as difference in daily cumulative reported numbers to allow for historical corrections in all data sources. This can occasionally result in negative numbers, such as for TAS and ACT, where historical details about doses have been updated.

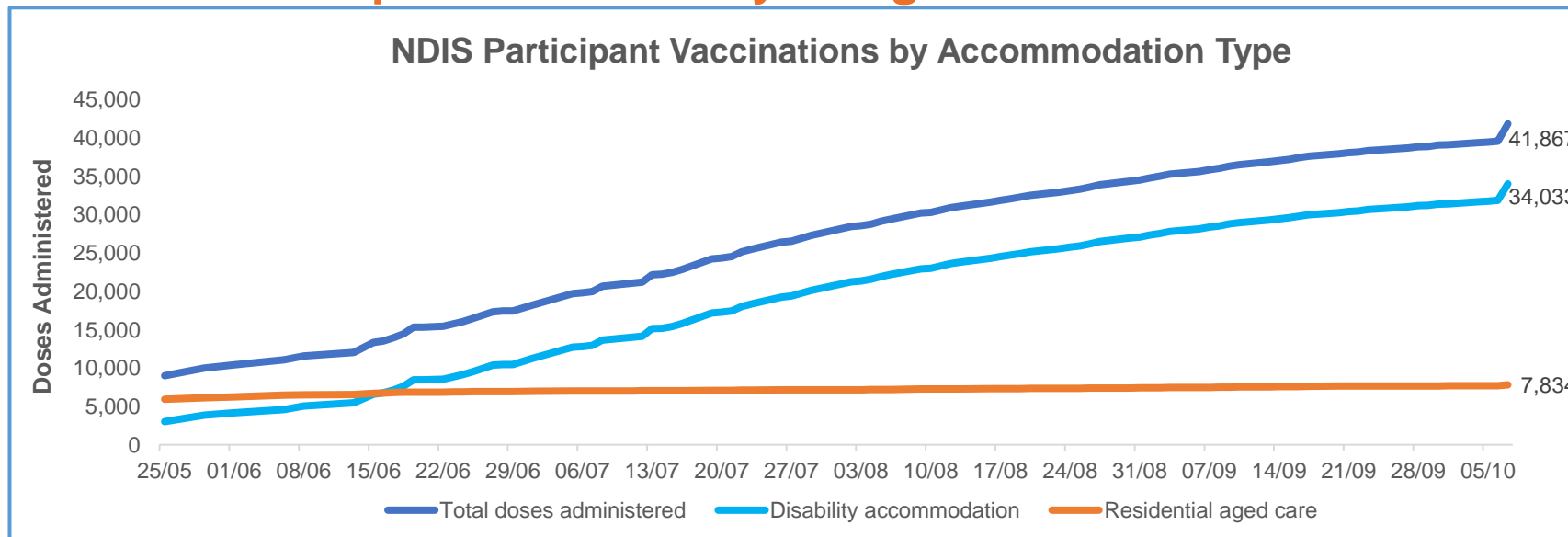
24,013

doses administered to persons residing in other territories or with missing residential information

Data as at:
07 Oct 2021*

Vaccination rate of people with disability and the disability workforce

Phase 1a – People with disability living in shared accommodation



| | Total people with at least one dose | People fully vaccinated | Total number of individuals in cohort | Total doses administered | % People with at least one dose | % People fully vaccinated |
|---|-------------------------------------|-------------------------|---------------------------------------|--------------------------|---------------------------------|---------------------------|
| NDIS participants living in shared accommodation ** | 22,053 | 19,814 | 27,293 | 41,867 | 80.8% | 72.6% |
| NDIS screened workers *** | 160,989 | 134,518 | 206,065 | 295,507 | 78.1% | 65.3% |



* Updates are available Monday to Friday on participants, and bi-weekly for workers, numbers may be up to four days old.

** Shared accommodation means two or more people with disability living in shared residential accommodation and NDIS participants living in Residential Aged Care accommodation as per the eligibility criteria of Phase 1a.

*** Total number of workers within the NDIS Commission Worker Screening database who have ever been successfully screened and linked to an NDIS registered provider or participant.

Source: Linkage between National Disability Insurance Agency data, NDIS Quality and Safeguards Commission data and the Australian Immunisation Register.

Following ongoing work by Services Australia to improve data matching between Medicare, the Australian Immunisation Register and National Disability Insurance Agency records, improvements to data reporting have been applied from 7 October 2021. These have resulted in a one off increase in reported numbers to include participants who were previously not accurately data matched.

Residential aged care vaccination rollout

Residential aged care facilities status

100% Commonwealth facilities visited (2,573 planned sites)

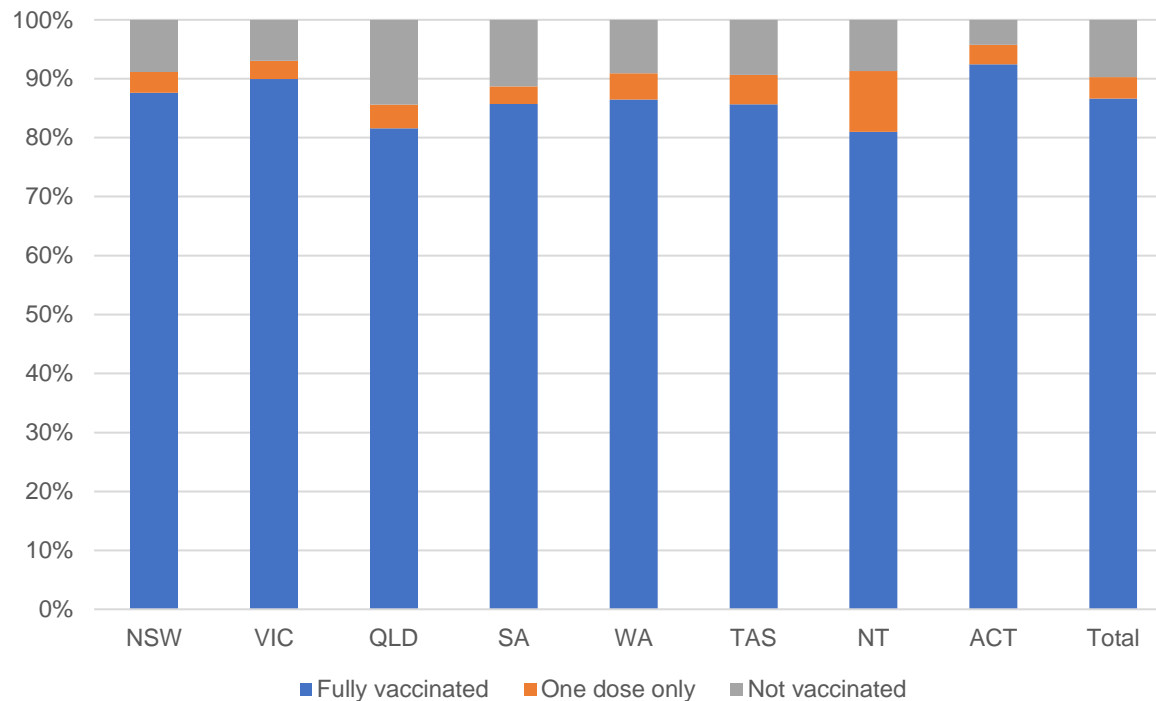
161,446 People fully vaccinated

90.3% Participation rate

Australia's COVID-19 Vaccine Roadmap

Data as at:
07 Oct 2021

Aged care resident vaccinations



Aged care worker vaccinations

| Jurisdictions | Total workers with at least one dose | Workers fully vaccinated | % Workers with at least one dose | % Workers fully vaccinated |
|---------------|--------------------------------------|--------------------------|----------------------------------|----------------------------|
| NSW | 78,747 | 69,574 | 99.7% | 88.1% |
| VIC | 71,440 | 62,320 | 99.6% | 86.9% |
| QLD | 47,905 | 39,548 | 99.9% | 82.4% |
| SA | 27,005 | 23,447 | 100.0% | 86.8% |
| WA | 23,293 | 18,496 | 99.5% | 79.0% |
| TAS | 7,589 | 6,488 | 100.0% | 85.5% |
| NT | 803 | 771 | 99.3% | 95.3% |
| ACT | 2,926 | 2,675 | 100.0% | 91.4% |
| Total | 259,708 | 223,319 | 99.7% | 85.8% |

Source: My Aged Care Portal staff vaccination progress

**Resident vaccination information is reported manually by service providers

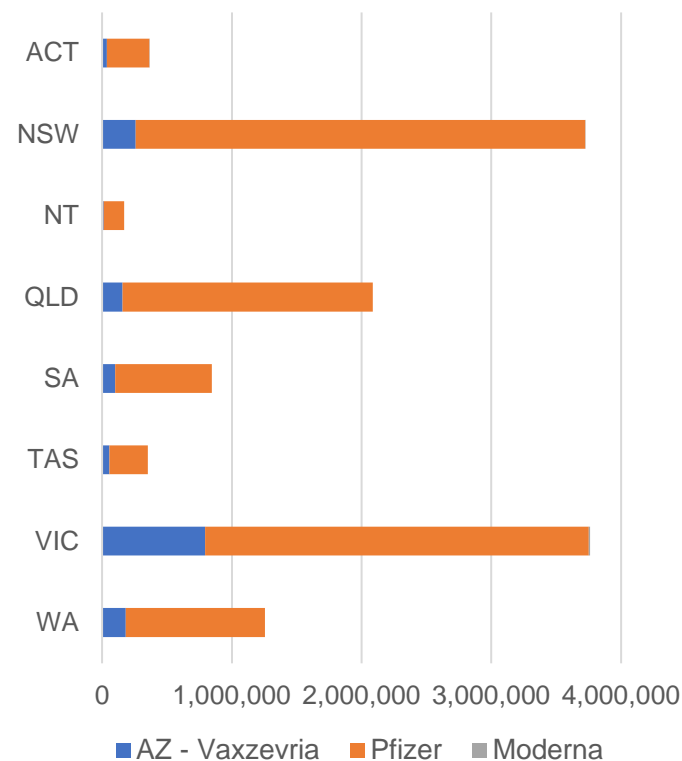
*Status updates are provided by facilities at least once per week. Reporting is updated Monday to Friday to encompass different facility updates being made on different days.

Data is sourced directly from Aged Care Service Providers and is not drawn or closely aligned with data from AIR due to inconsistencies and potential lags in uploading of records.

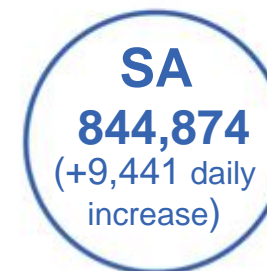
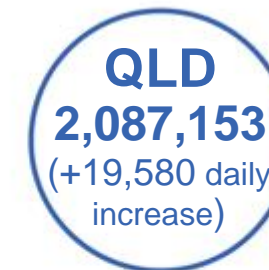
Data as at:
07 Oct 2021

Jurisdiction administered

Total vaccine doses administered in State and Territory clinics as at 07 October



12,562,196 total vaccine doses administered
in State and Territory clinics as at 07 October
+ **109,338** recorded in the last 24 hours
+ **702,329** recorded in the last 7 days

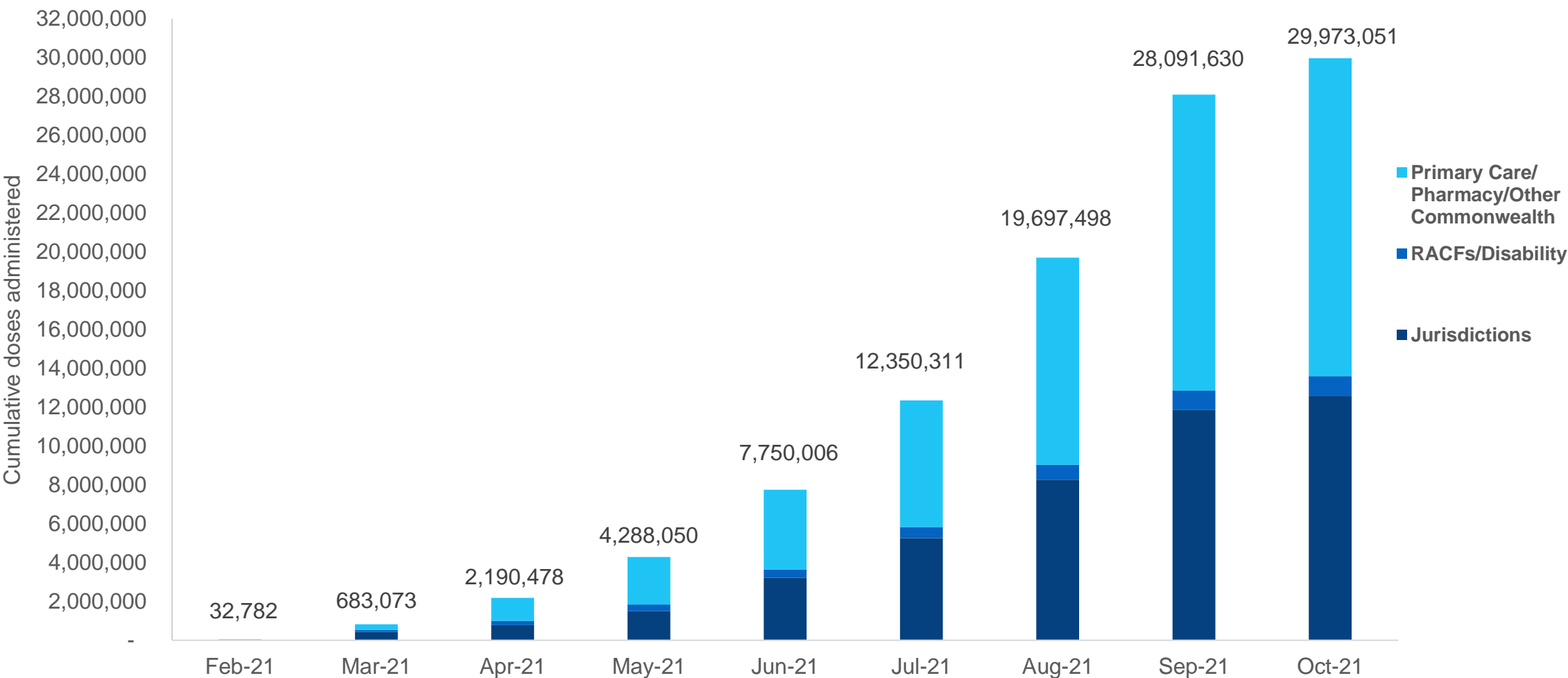


*Sourced from the Australian Immunisation Register and self-reported data. Numbers are calculated as difference in daily cumulative reported numbers to allow for historical corrections in all self-reported data sources.

Source: Australian Immunisation Register

Cumulative doses administered by channel

Data as at:
07 Oct 2021



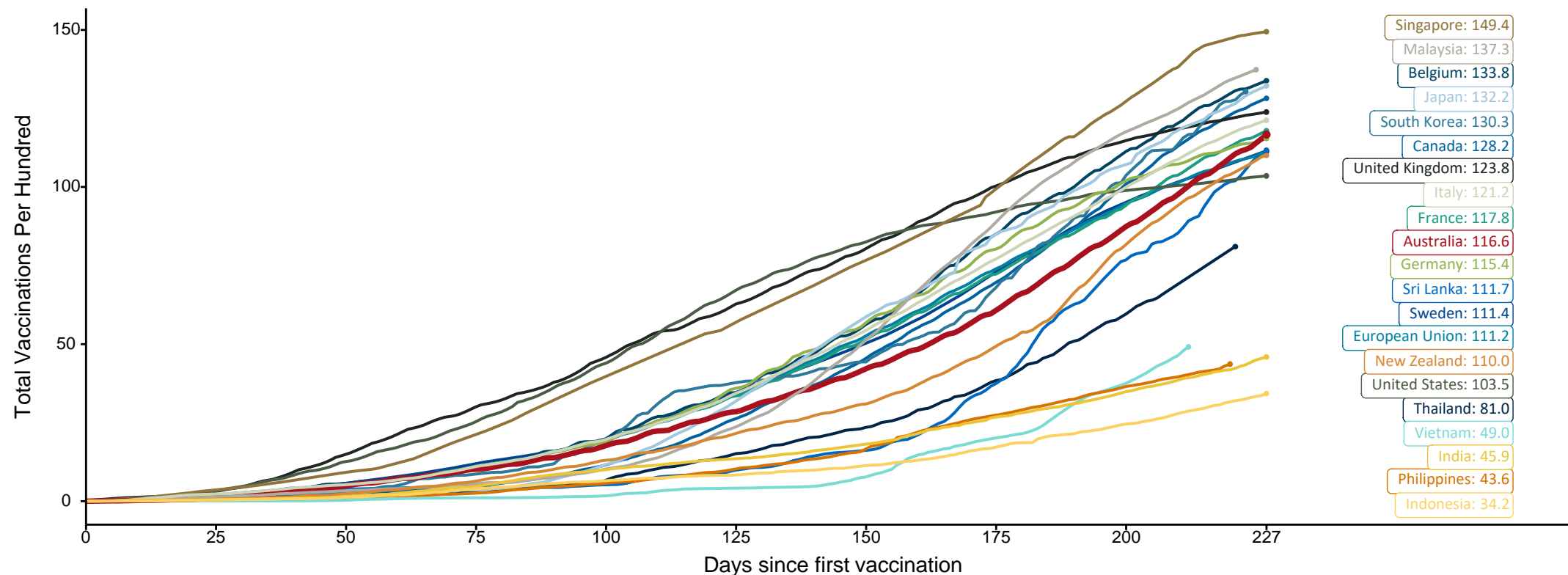
Source: Australian Immunisation Register

Doses at equivalent stages of rollout (Day 227)

Data as at:
07 Oct 2021

The x-axis is truncated at the length of Australia's vaccination program. Countries with intermittent reporting have had their doses per 100 imputed to Australia's current stage of rollout. Israel excluded as it is beyond scale of the graph

Cumulative doses administered (07 Oct): **29,973,051**

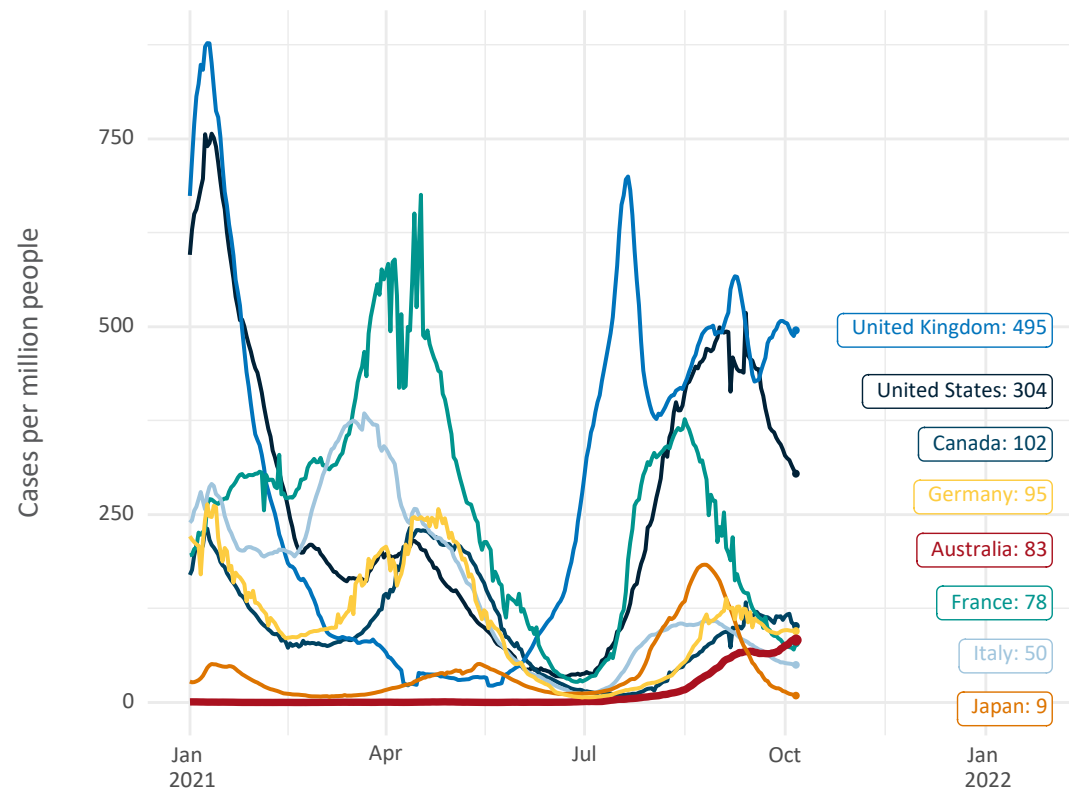


Note: From 15 September 2021, data for Australia includes all doses administered to people 12 and over. Prior to 15 September, data was for 16 and over
Source: Department of Health (Australia), Our World in Data (international)
Latest data: 07 October

International data – COVID-19

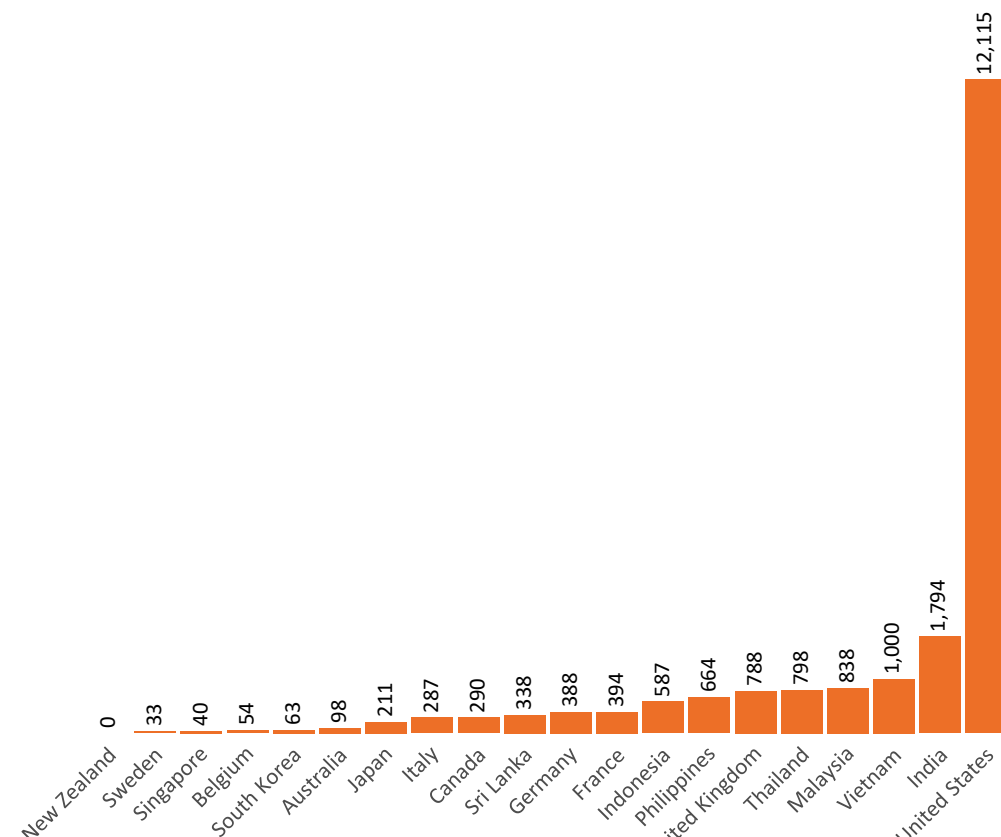
Data as at:
07 Oct 2021

New daily cases per million in 2021, Australia and G7 countries
Smoothed - 7 day average



Source: OWID
Data downloaded: 08 Oct 2021 11:19
Latest data: 06 Oct 2021


COVID-19 deaths in past 7 days - Australia and select countries



Source: OWID
Data downloaded: 08 Oct 2021 11:19
Latest data: 06 Oct 2021

Pandemic Response Payments

Data as at midnight:
7 Oct 2021



2.28 million

People have received at least one COVID Disaster Payment (including ISP200)

\$10.62 billion

Paid Out as at 7 Oct 2021

3.98 million

Claims granted across three different payments




93%

of Claims Received Digitally



| | |
|----------------------------------|--|
| COVID Disaster Payment: | 3.87 million claims received - 2.11 million individuals paid a total of \$10.29 billion. |
| \$200 Income Support Payment: | 248,000 claims received - 172,000 individuals paid a total of \$211.99 million. |
| Pandemic Leave Disaster Payment: | 86,000 claims received - 74,000 individuals paid a total of \$118.96 million. |



THREE PAYMENTS AVAILABLE

COVID Disaster Payment

assisting during a lockdown event in a Commonwealth hotspot.

Income Support Payment \$200

for income support recipients who lost at least 8 hours of work.

Pandemic Leave Disaster Payment

for those who have to self-isolate, quarantine or care.

For more information visit:
servicesaustralia.gov.au

COVID-19 DISASTER PAYMENTS

| | | | | | |
|--|---|--|---|---|---|
| <div> <div>New South Wales</div> <div>Active lockdown since 24 Jun</div> <div>1.06m people have received at least one COVID Disaster Payment.</div> <div>\$6.86b paid out as at 7 Oct 2021.</div> <div>\$599m paid in initial and reoccurring payments in the week ending 3 Oct 2021.</div> <div> <div>Cumulative payments made by State since activation on 1 Jul 2021.</div> <div> <div>\$4.89b</div> <div>\$5.52b</div> <div>\$6.14b</div> <div>\$6.74b</div> <div>\$6.86b</div> </div> </div> </div> | <div> <div>Victoria</div> <div>Active lockdown (#6) since 6 Aug</div> <div>692,000 people have received at least one COVID Disaster Payment.</div> <div>\$2.86b paid out as at 7 Oct 2021.</div> <div>\$455m paid in initial and reoccurring payments in the week ending 3 Oct 2021.</div> <div> <div>Cumulative payments made by State since activation on 8 Jun 2021.</div> <div> <div>\$1.65b</div> <div>\$1.99b</div> <div>\$2.36b</div> <div>\$2.82b</div> <div>\$2.86b</div> </div> </div> </div> | <div> <div>Australian Capital Territory</div> <div>Active lockdown since 12 Aug</div> <div>64,000 people have received at least one COVID Disaster Payment.</div> <div>\$262.7m paid out as at 7 Oct 2021.</div> <div>\$37m paid in initial and reoccurring payments in the week ending 3 Oct 2021.</div> <div> <div>Cumulative payments made by State since activation on 20 Aug 2021.</div> <div> <div>\$146.5m</div> <div>\$186.3m</div> <div>\$224.5m</div> <div>\$261.5m</div> <div>\$262.7m</div> </div> </div> </div> | <div> <div>Northern Territory</div> <div>Lockdown from 18 – 20 Jul Claiming period ended 13 Sep</div> <div>5,795 people have received at least one COVID Disaster Payment.</div> <div>\$3.76m paid out as at 7 Oct 2021.</div> <div>\$5,000 paid in initial payments in the week ending 3 Oct 2021.</div> <div> <div>Cumulative payments made by State since activation on 25 Aug 2021.</div> <div> <div>\$3.58m</div> <div>\$3.74m</div> <div>\$3.75m</div> <div>\$3.75m</div> <div>\$3.76m</div> </div> </div> </div> | <div> <div>Queensland</div> <div>Lockdown from 31 Jul – 11 Aug Claiming period ended 28 Aug</div> <div>196,000 people have received at least one COVID Disaster Payment.</div> <div>\$252.5m paid out as at 7 Oct 2021.</div> <div>\$24,000 paid in initial and reoccurring payments in the week ending 3 Oct 2021.</div> <div> <div>Cumulative payments made by State since activation on 7 Aug 2021.</div> <div> <div>\$252.3m</div> <div>\$252.4m</div> <div>\$252.5m</div> <div>\$252.5m</div> <div>\$252.5m</div> </div> </div> </div> | <div> <div>South Australia</div> <div>Lockdown from 21 – 27 Jul Claiming period ended 17 Aug</div> <div>86,000 people have received at least one COVID Disaster Payment.</div> <div>\$48.2m paid out as at 7 Oct 2021.</div> <div>\$1,000 paid in initial payments in the week ending 3 Oct 2021.</div> <div> <div>Cumulative payments made by State since activation on 28 Jul 2021.</div> <div> <div>\$48.2m</div> <div>\$48.2m</div> <div>\$48.2m</div> <div>\$48.2m</div> <div>\$48.2m</div> </div> </div> </div> |
|--|---|--|---|---|---|